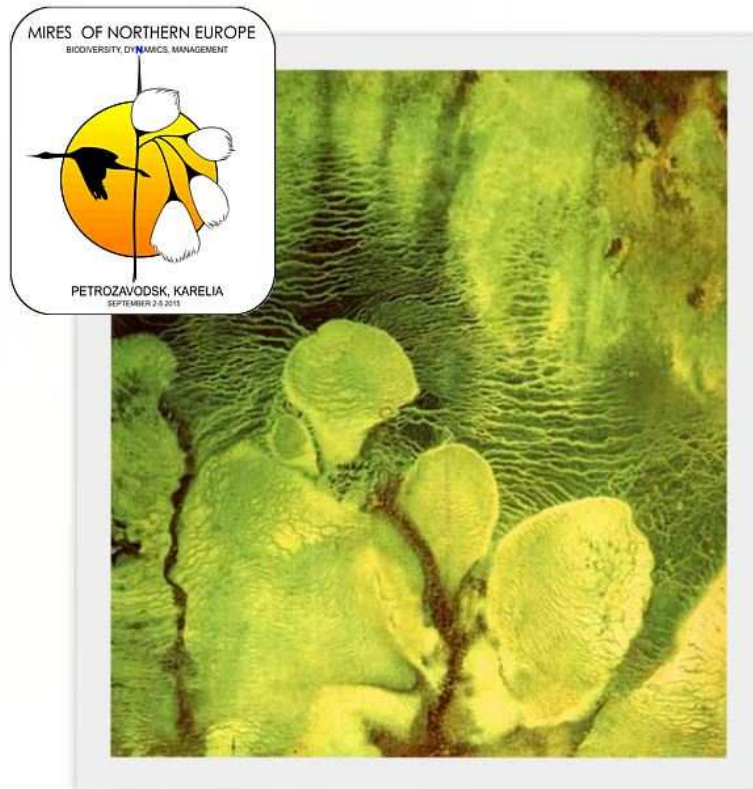


Federal Agency for Scientific Organizations
Russian Academy of Sciences branch of Biological Sciences
RAS Karelian Research Center Institute of Biology
RAS Institute of Forest Science
RAS Center of Forest Ecology and Productivity
Russian Botanical Society
Tver' State Technical University East European Institute of Peat
Trilateral Russian-Finnish-Norwegian Pasvik – Inari Park
Finnish Environment Institute (SYKE)
Office of the Finnmark County Governor (Norway)
International Mire Conservation Group (IMCG)

International symposium
**MIRES OF NORTHERN EUROPE: BIODIVERSITY, DYNAMICS,
MANAGEMENT**
(Russia, Petrozavodsk, September 2-5 2015)



SECOND CIRCULAR

Dear colleagues!

We are happy to announce that our symposium provoked great interest. Currently more than 120 specialists from seven countries are registered for it. Conference sessions will take place September 2-4, field excursions are planned for September 5th (please do not forget your rubber boots!) Extra information on excursions is planned to be in the third circular.

Book of abstracts is planned to be published by the conference starting. Please read the rules for abstract submission.

Venue

The symposium is to be held in the capital of Republic of Karelia, Petrozavodsk. To get to Petrozavodsk you may use following ways:

From Moscow

-airplane from Moscow Domodedovo airport, departure 10:15 everyday besides (Wednesday and Saturday) by Rusline (<http://www.rusline.aero/>) flight, arrival to Petrozavodsk 12:15. Ticket costs 4700 rubles one way, 8700 rubles round trip. Tickets can be purchased from an aggregator site like skyscanner.net .

-trains “Moscow-Petrozavodsk” or “Moscow-Murmansk” from Leningradskiy railway terminal (metro station “Komsomolskaya”). Suggested way is train 18 “Moscow-Petrozavodsk”, departure 20:40 every day, arrival to Petrozavodsk 8:33 next day. Ticket cost starts from 2400 rubles one way. Tickets can be purchased on Russian railways site: <http://pass.rzd.ru/main-pass/public/en>

From St.Petersburg

-trains “St.Petersburg-Petrozavodsk” and “St.Petersburg-Murmansk” from Ladozhskiy railway terminal (metro station “Ladozhskaya”). Suggested way is rapid train 805 “Lastochka”, departure St.Petersburg 18:00 every day, arrival to Petrozavodsk 22:55. NB! Despite this way is quite fast and cheap it can be a bit uncomfortable still it arrives a bit late when public transport in Petrozavodsk do not operate any more so you need to use taxi to get to the place. Otherwise you should use night train 22 which leaves St.Petersburg 23:20 every day except Saturday and Sunday, and arrives in Petrozavodsk 07:00 next day. The prices for both trains are comparable and it starts from 900 rubles for one way ticket. The tickets can be purchased online: <http://pass.rzd.ru/main-pass/public/en>

-buses from St.Petersburg bus terminal (“Obvodnoy kanal” metro station) depart 8:30, 13:00 and 22:00 every day and go ca 8 hours. The price of ticket is 700-800 rubles.

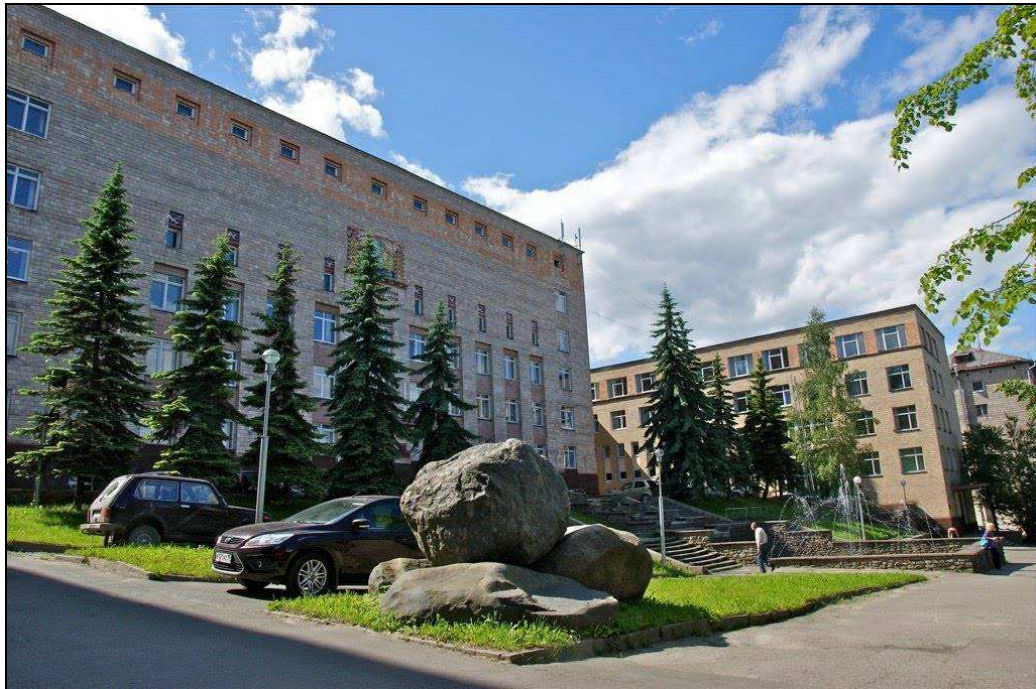
From Joensuu (Finland)

-bus 901 “Joensuu-Petrozavodsk”, departs from Joensuu bus station 17:00 every day, and arrives in Petrozavodsk 01:30. This way of getting from Finland is the cheapest (13 Euros one way only) but generally of low comfort especially because of late arrival, so it could be suggested mainly to persons living close to bus and railway stations. Tickets can be purchased from <https://matkahuolto.fi/en/>

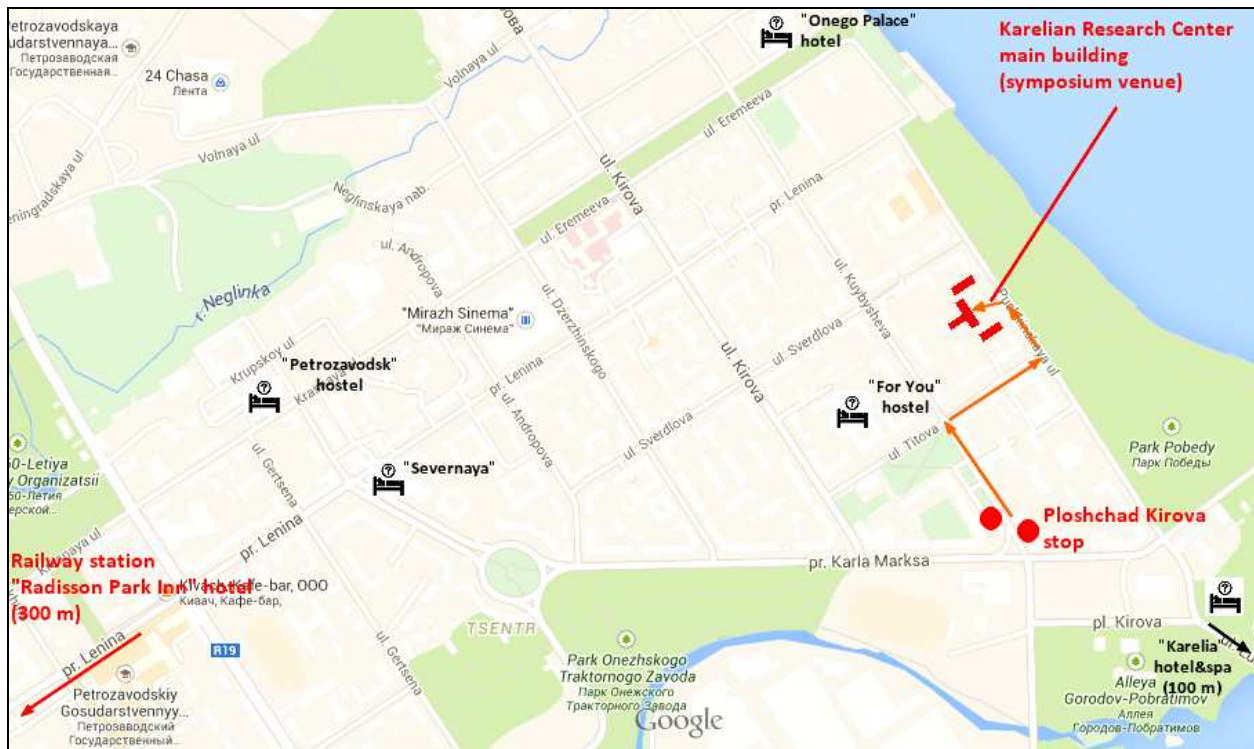
It is also possible to have a place in a route taxi from Joensuu to Petrozavodsk. The taxi costs 35 Euros in one direction, and it picks people from any address in Joensuu and delivers to any hotel in Petrozavodsk. You can get help in ordering the taxi places from Raimo Heikkilä (raimo.heikkila@ymparisto.fi). It is also possible to order a car for maximum 4 persons from Joensuu to Petrozavodsk (140 Euros) or a minibus up to 8 persons (215 euros, all prices as of 1st of March).

NB! The timetables and ticket prices are given as they were 01.03.2015 just for orientation. It might be changed by the time of conference. Please check it by yourselves.

Conference sessions are to take place in the main building of RAS Karelian Research center (Petrozavodsk, Pushkinskaya 11).



The nearest public transport stop to the symposium venue is “Ploshchad Kirova” (Kirov Square). Please learn how to get there from you hotel at your reception desk.



Accommodation

Steering group does not provide participants with accommodation. To find it for conference period please use booking services like <http://www.booking.com>, <https://ostrovok.ru/> etc. A good example of hotel booking aggregator is <http://www.skyscanner.net/hotels.html>

For your convenience please try to book hotel as close to conference venue as you can. Suggested options below.

If you are limited in money you can try those options of economy class:

- “Petrozavodsk” hostel - <http://en.petrohostel.ru/> - in the very city center.
- “Karelia-hostel” - <http://kareliahostel.ru> – near Onego lake
- “For you” hostel - <http://foryouhostel.ru> – about 5 minutes from the symposium place on foot (no English webpage unfortunately)
- “Severnaya” hotel - <http://en.severnaya.info/hotel/> – geographical city center, 10-15 minutes from the conference venue by foot. Normally needs reservation long in advance.

If comfort means more than money for you, you can choose the following places in the city center:

- “Onego Palace” - <http://onegopalace.com/en/> - on the lakeshore, just 5 minutes by foot from the Karelian Research Center main building
- “Radisson Park Inn” - <http://www.parkinn.com/hotel-petrozavodsk> - just beside the Railway station. 20 minutes to walk to the conference venue, and buses (e.g. number 17, trolleybus 1 etc.) just outside the hotel every minute along Prospekt Lenina.
- “Karelia” hotel&Spa - <http://www.karelia-hotel.ru/eng/> near Onego lake and park, about 10 minutes from the symposium venue on foot.

In case if you have some problems or questions do not hesitate to contact us!

mire2015@krc.karelia.ru